



CORN SEED

# DKC098-88RIB Brand Blend

## Brand Blend

DKC098-88RIB Brand Blend is a VT4PRO™ Technology product that has shown exceptional yield performance potential and a strong defensive agronomic package.



Selected Trait: **VT4PRO™ RIB Complete® Corn Blend**



VT4PRI8

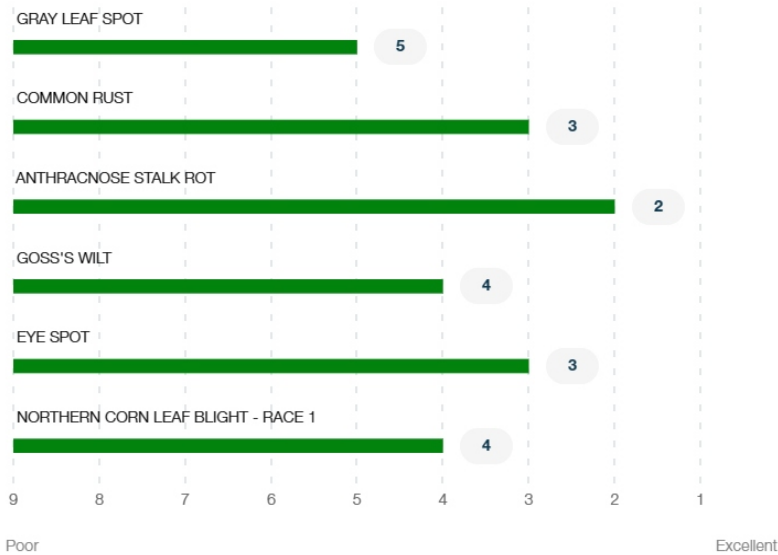
Maturity **98**

## Strengths

- Excellent yield performance potential with broad east to west placement
- Very good emergence and seedling vigor offer flexible planting window
- Strong defensive agronomic package with excellent root strength, good stalk strength, and very good greensnap tolerance
- Very strong disease tolerance package including Northern Corn Leaf Blight, Goss's Wilt, and Anthracnose Stalk Rot
- VT4PRO™ Technology provides enhanced above ground protection with RNAi Technology for corn root worm protection
- Awesome plant stature with a medium short plant height and balanced ear placement

## Product Details

### Disease Ratings (Gray Leaf Spot + 5 More)



### Growth (Seedling Growth + 7 More)



  
Seedling Growth  
Excellent

3

Stalk Strength

**Med Short**

Plant Height

  
Emergence  
Excellent

  
2

Drought Tolerance  
Excellent

**Medium**

Ear Placement

  
Root Strength  
Excellent

3

Greensnap  
Tolerance

**Management** (Gdus To Mid-Pollination + 6 More) ^

GDUS TO MID-POLLINATION

1270

GDUS TO BLACK LAYER

2465

VALUE ADDED TRAIT

VT4PRIB

RELATIVE MATURITY

98

PLANTING RATE

Med High

NEW PRODUCT

YES

VARIETY

01102542

**Harvest** (Staygreen + 3 More) ^

3

Staygreen

3

Harvest Appearance

  
2

Drydown  
Excellent

3

Test Weight

**Herbicide** (Growth Regulators Sensitivity + 2 More) ^

**A**

Growth Regulators  
Sensitivity

**A**

Isoxazoles  
Sensitivity -  
Preemergence

**A**

Sulfonylureas  
Sensitivity

**Plant Description** (Cob Color + 2 More) ^

**Red**

Cob Color

**Yellow**

Kernel Cap Color

**18**

Kernel Row

**Product Details Key:** ^

**Local Rating Scale**

 Highly Recommended

 Recommended with Management

 Use with Management

 Not Recommended

 New Product

**National Rating Scale**

1 = Excellent, 9 = Poor, NR = Not Recommended, - = data is insufficient at this time.

**Herbicide Sensitivity**

A = Acceptable, C = Caution, W = Warning. Environmental conditions may cause herbicide interactions different than indicated for a particular growing season.

**Herbicide Tolerance**

Ratings are based on observations and research using herbicides at labeled and above labeled rates to simulate extreme environmental conditions, misapplication and adverse soil pH or organic content.

**GDU (Growing Degree Unit)**

Ratings are based on observations and research using herbicides at labeled and above labeled rates to simulate extreme environmental conditions, misapplication and adverse soil pH or organic content.