



CORN SEED

DKC105-35RIB Brand Blend

Brand Blend

DKC105-35RIB Brand Blend is a robust 105 RM product that has shown impressive yield potential with broad adaptation across yield environments and good southern movement. Strong emergence and early season growth, very good agronomics, and excellent late season harvest appearance are additional features of this product.



Selected Trait: **VT Double PRO® RIB Complete® corn blend**



VT2PRI8

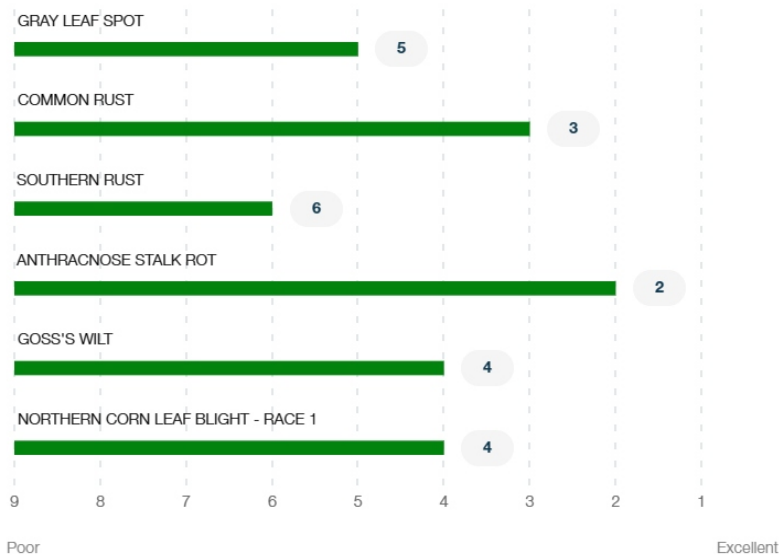
Maturity **105**

Strengths

- Product has shown impressive yield potential and broad adaptation across yield environments with potential movement south into the early 110 RM zone
- Robust plant type features excellent staygreen and a favorable harvest appearance
- Excellent husk cover on a semi-fixed ear type
- Plant at medium-high populations to help maximize yield potential
- Has shown strong overall disease tolerance package including solid Goss's Wilt, Northern Corn Leaf Blight, and Anthracnose Stalk Rot tolerance

Product Details

Disease Ratings (Gray Leaf Spot + 5 More)



Growth (Seedling Growth + 7 More)




Seedling Growth
Excellent


Emergence
Excellent

4
Root Strength

3
Stalk Strength


Drought Tolerance
Excellent


3
Greensnap
Tolerance

Med Tall

Medium

Plant Height

Ear Placement

Management (Gdus To Mid-Pollination + 6 More) 

GDUS TO MID-POLLINATION

1305

GDUS TO BLACK LAYER

2605

VALUE ADDED TRAIT

VT2PRIB

RELATIVE MATURITY

105

PLANTING RATE


Med High

NEW PRODUCT

NO

VARIETY

01091224

Harvest (Staygreen + 3 More) 


Staygreen
Excellent


Harvest Appearance
Excellent

3
Drydown

4
Test Weight

Herbicide (Growth Regulators Sensitivity + 2 More) 

A
Growth Regulators
Sensitivity

A
Isoxazoles
Sensitivity -
Preemergence

A
Sulfonylureas
Sensitivity

Plant Description (Cob Color + 2 More) 

Red
Cob Color

Yellow
Kernel Cap Color

18
Kernel Row

Product Details Key: 

Local Rating Scale

 Highly Recommended

 Recommended with Management

 Use with Management

 Not Recommended

 New Product

National Rating Scale

1 = Excellent, 9 = Poor, NR = Not Recommended, - = data is insufficient at this time.

Herbicide Sensitivity

A = Acceptable, C = Caution, W = Warning. Environmental conditions may cause herbicide interactions different than indicated for a particular growing season.

Herbicide Tolerance

Ratings are based on observations and research using herbicides at labeled and above labeled rates to simulate extreme environmental conditions, misapplication and adverse soil pH or organic content.

GDU (Growing Degree Unit)

Ratings are based on observations and research using herbicides at labeled and above labeled rates to simulate extreme environmental conditions, misapplication and adverse soil pH or organic content.