



CORN SEED

DKC47-85RIB Brand Blend

Brand Blend

DKC47-85RIB Brand Blend is a 97 RM DEKALB® Disease Shield® product offering outstanding yield performance potential and a strong defensive package. This product has shown broad adaption from east to west and across soil types.



Selected Trait: **VT Double PRO® RIB Complete® corn blend**



VT2PRI8



Disease Shield

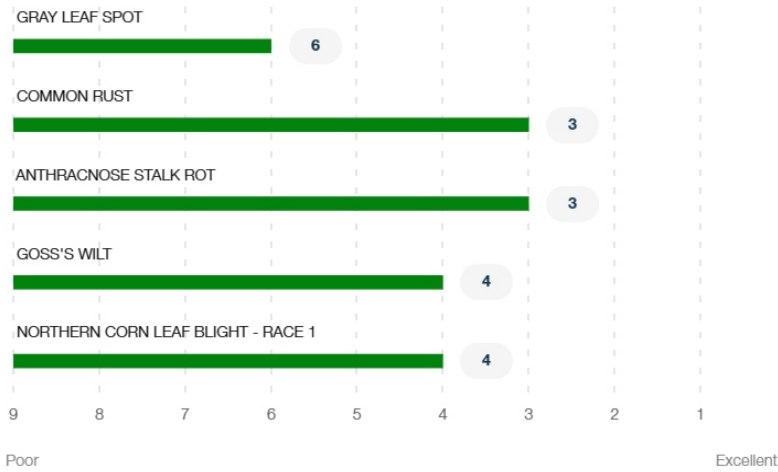
Maturity **97**

Strengths

- Outstanding yield potential with semi-fixed ear; consider medium-high population
- Strong Goss's Wilt, Northern Corn Leaf Blight, and Anthracnose Stalk Rot disease tolerance package
- Strong defensive package with excellent stress tolerance, strong greensnap tolerance, and solid root and stalk strength
- Product has shown excellent staygreen and late season harvest appearance
- Average test weight with consistent ear placement

Product Details

Disease Ratings (Gray Leaf Spot + 4 More)



Growth (Seedling Growth + 7 More)

3
Seedling Growth

3
Emergence

2
Root Strength
Excellent

3	1	3
Stalk Strength	Drought Tolerance Excellent	Greensnap Tolerance
Medium	Medium	
Plant Height	Ear Placement	

Management (Gdus To Mid-Pollination + 7 More) ^

GDUS TO MID-POLLINATION	1260
GDUS TO BLACK LAYER	2415
VALUE ADDED TRAIT	VT2PRIB
RELATIVE MATURITY	97
PLANTING RATE	Med High
NEW PRODUCT	NO
DEKALB® DISEASE SHIELD®	YES
VARIETY	01090936

Harvest (Staygreen + 3 More) ^

3	2	2
Staygreen	Harvest Appearance Excellent	Drydown Excellent
4		
Test Weight		

Herbicide (Growth Regulators Sensitivity + 2 More) ^

A	A	A
Growth Regulators Sensitivity	Isoxazoles Sensitivity - Preemergence	Sulfonyleureas Sensitivity

Plant Description (Cob Color + 2 More) ^

Red	Yellow	16
Cob Color	Kernel Cap Color	Kernel Row

Product Details Key: ^

Local Rating Scale

- ★ Highly Recommended
- 🛡️ Recommended with Management
- 🚩 Use with Management
- 🚫 Not Recommended
- ⚙️ New Product

National Rating Scale

1 - Excellent 2 - Poor NP - Not Recommended - data is insufficient at this time

1 = Excellent, 2 = Good, 3 = Fair, 4 = Not Recommended, 5 = Data is insufficient at this time.

Herbicide Sensitivity

A = Acceptable, C = Caution, W = Warning. Environmental conditions may cause herbicide interactions different than indicated for a particular growing season.

Herbicide Tolerance

Ratings are based on observations and research using herbicides at labeled and above labeled rates to simulate extreme environmental conditions, misapplication and adverse soil pH or organic content.

GDU (Growing Degree Unit)

Ratings are based on observations and research using herbicides at labeled and above labeled rates to simulate extreme environmental conditions, misapplication and adverse soil pH or organic content.