



CORN SEED

DKC48-69RIB Brand Blend

Brand Blend

DKC48-69RIB Brand Blend can offer growers an eye catching plant appearance with solid agronomics and yield potential across environments. A broad acre product that has shown the best performance potential in the 95 and 100 relative maturity zones with excellent south of zone utilization.



Selected Trait: **VT Double PRO® RIB Complete® corn blend**



VT2PRI8

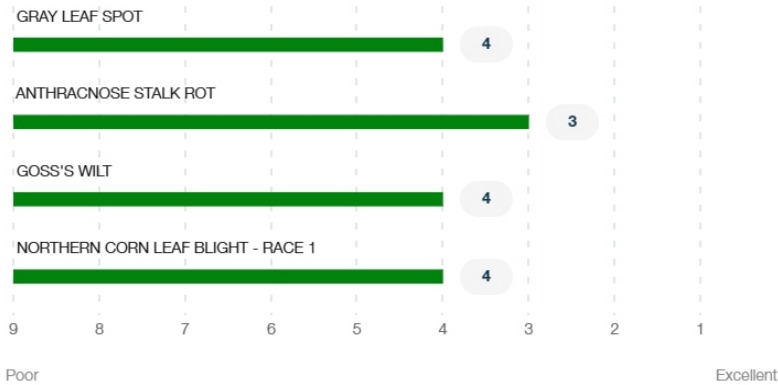
Maturity **98**

Strengths

- Bold field appearance, medium tall plant height with a semi-erect canopy type; medium ear height
- Good overall emergence and seedling vigor package
- Has shown a solid agronomic package including very good stalk and root strength as well as very good greensnap tolerance
- Hybrid has demonstrated a good overall Northern disease package
- Semi-flex ear type with girth for top end yield potential
- Excellent grain quality and test weight
- Prefers a medium population recommendation but will handle higher end planting rates with increasing management to support
- Has shown very good performance in corn following corn systems as well as the rotated acre

Product Details

Disease Ratings (Gray Leaf Spot + 3 More)



Growth (Seedling Growth + 7 More)



Excellent



Stalk Strength
Excellent



Drought Tolerance
Excellent



Greensnap
Tolerance
Excellent

Med Tall

Plant Height

Medium

Ear Placement

Management (Gdus To Mid-Pollination + 6 More)



GDUS TO MID-POLLINATION	1275
GDUS TO BLACK LAYER	2465
VALUE ADDED TRAIT	VT2PRIB
RELATIVE MATURITY	98
PLANTING RATE	Medium
NEW PRODUCT	NO
VARIETY	01086122

Harvest (Staygreen + 3 More)



Staygreen
Excellent



Harvest Appearance
Excellent

3

Drydown



Test Weight
Excellent

Herbicide (Growth Regulators Sensitivity + 2 More)



A

Growth Regulators
Sensitivity

A

Isoxazoles
Sensitivity -
Preemergence

A

Sulfonylureas
Sensitivity

Plant Description (Cob Color + 2 More)



Red

Cob Color

Yellow

Kernel Cap Color

20

Kernel Row

Product Details Key:



Local Rating Scale

- Highly Recommended
- Recommended with Management
- Use with Management
- Not Recommended
- New Product

National Rating Scale

1 = Excellent, 9 = Poor, NR = Not Recommended, - = data is insufficient at this time.

Herbicide Sensitivity

A = Acceptable, C = Caution, W = Warning. Environmental conditions may cause herbicide interactions different than indicated for a particular growing season.

Herbicide Tolerance

Ratings are based on observations and research using herbicides at labeled and above labeled rates to simulate extreme environmental conditions, misapplication and adverse soil pH or organic content.

GDU (Growing Degree Unit)

Ratings are based on observations and research using herbicides at labeled and above labeled rates to simulate extreme environmental conditions, misapplication and adverse soil pH or organic content.