



CORN SEED

# DKC52-18RIB Brand Blend

## Brand Blend

DKC52-18RIB Brand Blend is an eye-catching 102 RM hybrid that has shown excellent yield potential and stability in the 100 to 105 RM zones. It can provide an overall good agronomic package including good stalks and root strength as well as greensnap tolerance.



Selected Trait: **SmartStax® RIB Complete® corn blend**



SSRIB

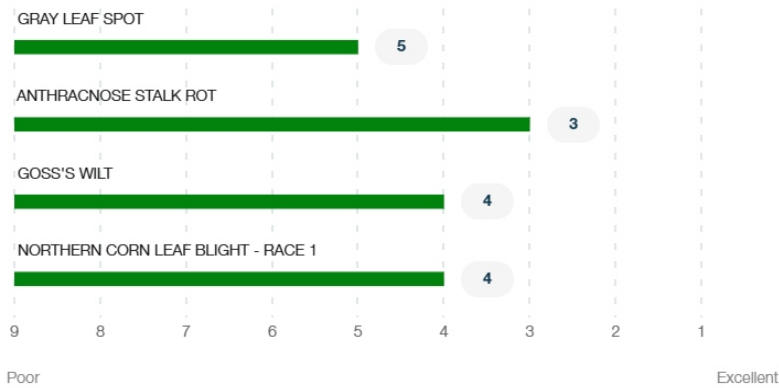
Maturity **102**

## Strengths

- Very good test weight and grain quality
- Can provide good Goss's Wilt tolerance
- Very good stalk strength
- Excellent staygreen and very good late season harvest appearance
- Hybrid has shown good performance in stressed growing conditions
- Has shown to be a strong candidate for corn following corn environments
- Product has shown response to density in managed programs to maximize yield potential

## Product Details

### Disease Ratings (Gray Leaf Spot + 3 More)



### Growth (Seedling Growth + 7 More)



<b>2</b>	<b>3</b>	<b>3</b>
Stalk Strength Excellent	Drought Tolerance	Greensnap Tolerance
<b>Medium</b>	<b>Medium</b>	
Plant Height	Ear Placement	

**Management** (Gdus To Mid-Pollination + 6 More) ^

GDUS TO MID-POLLINATION	<b>1285</b>
GDUS TO BLACK LAYER	<b>2540</b>
VALUE ADDED TRAIT	<b>SSRIB</b>
RELATIVE MATURITY	<b>102</b>
PLANTING RATE	<b>Med High</b>
NEW PRODUCT	<b>NO</b>
VARIETY	<b>01080462</b>

**Harvest** (Staygreen + 3 More) ^

<b>3</b>	<b>2</b>	<b>3</b>
Staygreen	Harvest Appearance Excellent	Drydown
<b>3</b>		
Test Weight		

**Herbicide** (Growth Regulators Sensitivity + 2 More) ^

<b>A</b>	<b>A</b>	<b>A</b>
Growth Regulators Sensitivity	Isoxazoles Sensitivity - Preemergence	Sulfonylureas Sensitivity

**Plant Description** (Cob Color + 2 More) ^

<b>Red</b>	<b>Yellow</b>	<b>18</b>
Cob Color	Kernel Cap Color	Kernel Row

**Product Details Key:** ^

**Local Rating Scale**

- ★ Highly Recommended
- 🚩 Use with Management
- ⚙️ New Product
- 🛡️ Recommended with Management
- 🚫 Not Recommended

**National Rating Scale**

1 = Excellent, 9 = Poor, NR = Not Recommended, - = data is insufficient at this time.

**Herbicide Sensitivity**

A = Acceptable, C = Caution, W = Warning. Environmental conditions may cause herbicide interactions different than indicated for a particular growing season.

**Herbicide Tolerance**

Ratings are based on observations and research using herbicides at labeled and above labeled rates to simulate extreme environmental conditions, misapplication and adverse soil pH or organic content.

**GDU (Growing Degree Unit)**

Ratings are based on observations and research using herbicides at labeled and above labeled rates to simulate extreme environmental conditions, misapplication and adverse soil pH or organic content.