



CORN SEED

DKC54-40RIB Brand Blend

Brand Blend

DKC54-40RIB Brand Blend can provide excellent yield potential and Goss's Wilt tolerance. Has shown very good greensnap tolerance combined with solid roots and stalks make this a very reliable addition to the 105 RM.

Selected Trait: **VT Double PRO® RIB Complete® corn blend**



VT2PRI8



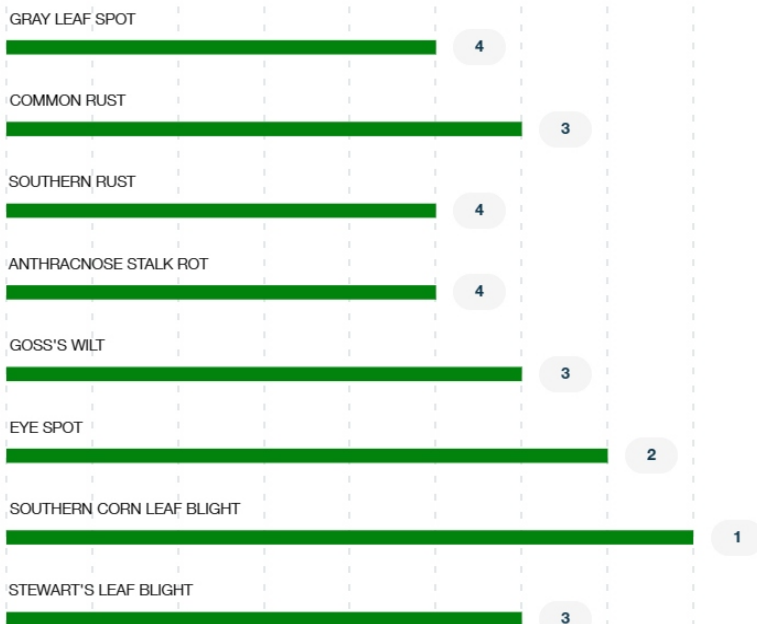
Maturity **104**

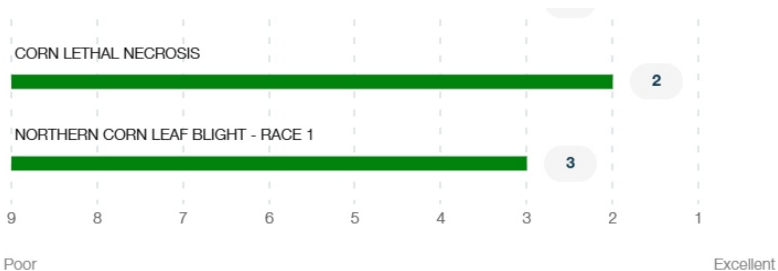
Strengths

- Very good top-end yield potential
- Very good Goss's Wilt tolerance
- Has shown solid roots and stalks
- Has shown good greensnap tolerance
- Position in areas with moderate or worse Goss' Wilt pressure
- Position as a product that can perform well in the 100, 105 and 110 RM zones
- Good performance in areas with moderate or less drought stress
- Semi-flex ear allows for planting from 30 to 40K PPA depending on yield environment

Product Details

Disease Ratings (Gray Leaf Spot + 9 More)





Growth (Seedling Growth + 7 More) ^

<p>2</p> <p>Seedling Growth</p> <p>Excellent</p>	<p>1</p> <p>Emergence</p> <p>Excellent</p>	<p>2</p> <p>Root Strength</p> <p>Excellent</p>
<p>2</p> <p>Stalk Strength</p> <p>Excellent</p>	<p>3</p> <p>Drought Tolerance</p>	<p>3</p> <p>Greensnap Tolerance</p>
<p>Medium</p> <p>Plant Height</p>	<p>Medium</p> <p>Ear Placement</p>	

Management (Gdus To Mid-Pollination + 6 More) ^

GDUS TO MID-POLLINATION	1300
GDUS TO BLACK LAYER	2600
VALUE ADDED TRAIT	VT2PRIB
RELATIVE MATURITY	104
PLANTING RATE	Med High
NEW PRODUCT	NO
VARIETY	01050410

Harvest (Staygreen + 3 More) ^

<p>4</p> <p>Staygreen</p>	<p>3</p> <p>Harvest Appearance</p>	<p>2</p> <p>Drydown</p> <p>Excellent</p>
<p>3</p> <p>Test Weight</p>		


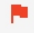



Herbicide (Growth Regulators Sensitivity + 2 More) ^

<p>A</p> <p>Growth Regulators Sensitivity</p>	<p>C</p> <p>Isoxazoles Sensitivity - Preemergence</p>	<p>A</p> <p>Sulfonylureas Sensitivity</p>
--	--	--

Plant Description (Cob Color + 2 More) ^

Red	Yellow	18
------------	---------------	-----------

Product Details Key: ^**Local Rating Scale**

-  Highly Recommended
-  Use with Management
-  New Product
-  Recommended with Management
-  Not Recommended

National Rating Scale

1 = Excellent, 9 = Poor, NR = Not Recommended, - = data is insufficient at this time.

Herbicide Sensitivity

A = Acceptable, C = Caution, W = Warning. Environmental conditions may cause herbicide interactions different than indicated for a particular growing season.

Herbicide Tolerance

Ratings are based on observations and research using herbicides at labeled and above labeled rates to simulate extreme environmental conditions, misapplication and adverse soil pH or organic content.

GDU (Growing Degree Unit)

Ratings are based on observations and research using herbicides at labeled and above labeled rates to simulate extreme environmental conditions, misapplication and adverse soil pH or organic content.