



CORN SEED

DKC55-53RIB Brand Blend

Brand Blend

DKC55-53RIB Brand Blend has shown consistent yields under drought stress as well as in productive environments. A strong agronomic and disease package help make this product suited to most environments and management systems.



Selected Trait: **SmartStax® RIB Complete® corn blend**



SSRIB



Disease Shield

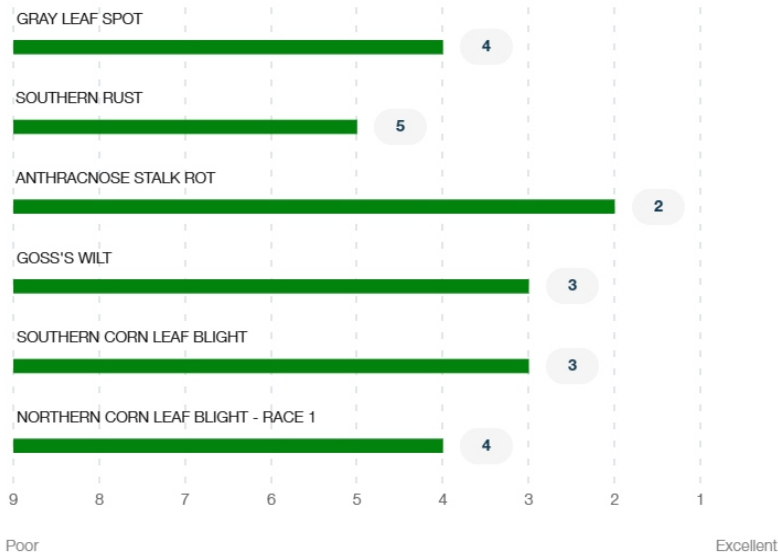
Maturity **105**

Strengths

- Can provide strong physoderma tolerance
- Strong Goss's Wilt and greensnap ratings
- Plant at medium to medium-high populations to help maximize performance
- Adaptable to corn following corn rotations
- Excellent silage yield potential with strong quality data
- Use appropriate caution when using growth regulator herbicides




Product Details

Disease Ratings (Gray Leaf Spot + 5 More)



Growth (Seedling Growth + 7 More)





 Seedling Growth Excellent	3 Emergence	3 Root Strength
3 Stalk Strength	 Drought Tolerance Excellent	 Greensnap Tolerance Excellent
Medium Plant Height	Medium Ear Placement	

Management (Gdus To Mid-Pollination + 7 More) ^

GDUS TO MID-POLLINATION	1330
GDUS TO BLACK LAYER	2605
VALUE ADDED TRAIT	SSRIB
RELATIVE MATURITY	105
PLANTING RATE	Medium
NEW PRODUCT	NO
DEKALB® DISEASE SHIELD®	YES
VARIETY	01075030

Harvest (Staygreen + 3 More) ^

 Staygreen Excellent	3 Harvest Appearance	 Drydown Excellent
3 Test Weight		

Herbicide (Growth Regulators Sensitivity + 2 More) ^





C Growth Regulators Sensitivity	A Isoxazoles Sensitivity - Preemergence	A Sulfonylureas Sensitivity
---	---	---------------------------------------

Plant Description (Cob Color + 2 More) ^

Red Cob Color	Yellow Kernel Cap Color	16 Kernel Row
-------------------------	-----------------------------------	-------------------------

Product Details Key: ^

Local Rating Scale

-  Highly Recommended
-  Recommended with Management
-  Use with Management
-  Not Recommended

National Rating Scale

1 = Excellent, 9 = Poor, NR = Not Recommended, - = data is insufficient at this time.

Herbicide Sensitivity

A = Acceptable, C = Caution, W = Warning. Environmental conditions may cause herbicide interactions different than indicated for a particular growing season.

Herbicide Tolerance

Ratings are based on observations and research using herbicides at labeled and above labeled rates to simulate extreme environmental conditions, misapplication and adverse soil pH or organic content.

GDU (Growing Degree Unit)

Ratings are based on observations and research using herbicides at labeled and above labeled rates to simulate extreme environmental conditions, misapplication and adverse soil pH or organic content.