



CORN SEED

DKC56-26RIB Brand Blend

Brand Blend

DKC56-26RIB Brand Blend can offer growers a moderate plant type with solid agronomics in the Central to East 105RM zone. This product has shown excellent yield potential and stable performance under stressed conditions.



Selected Trait: **Trecepta™ RIB Complete® corn blend**



TRERIB

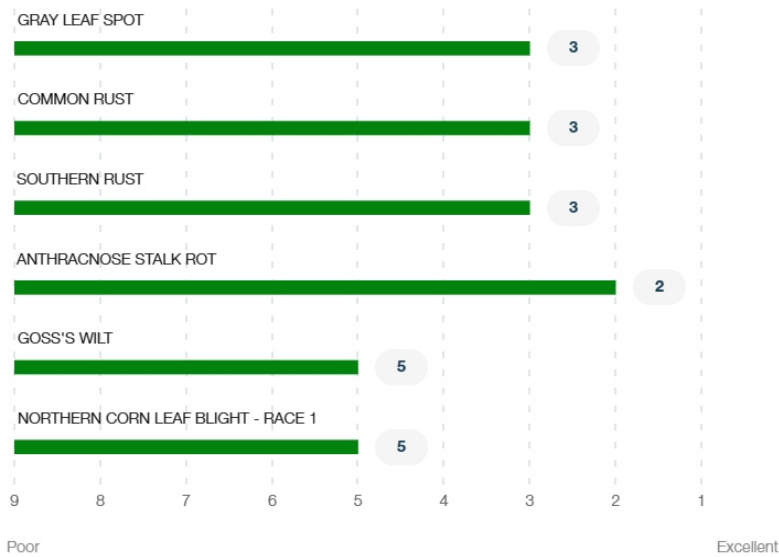
Maturity **106**

Strengths

- Central to East product has shown excellent yield potential in the 105 RM zone
- Semi-flex ear type has showcased good performance at medium populations
- Solid agronomic package with excellent stalk strength and greensnap tolerance
- Product has demonstrated stability under heat and drought stress
- Has shown average staygreen and harvest appearance with quick dry down
- Average emergence package
- Nice disease tolerance package with excellent Southern Rust, Gray Leaf Spot, and Anthracnose Stalk Rot tolerance
- May benefit from a fungicide in heavy Northern Corn Leaf Blight fields

Product Details

Disease Ratings (Gray Leaf Spot + 5 More)



Growth (Seedling Growth + 7 More)

3

Seedling Growth



Stalk Strength
Excellent

Medium

Plant Height

3

Emergence



Drought Tolerance
Excellent

Med High

Ear Placement

3

Root Strength



Greensnap
Tolerance
Excellent

Management (Gdus To Mid-Pollination + 6 More)

| | |
|-------------------------|----------|
| GDUS TO MID-POLLINATION | 1315 |
| GDUS TO BLACK LAYER | 2650 |
| VALUE ADDED TRAIT | TRETRIB |
| RELATIVE MATURITY | 106 |
| PLANTING RATE | Medium |
| NEW PRODUCT | NO |
| VARIETY | 01090430 |

Harvest (Staygreen + 3 More)

4

Staygreen

5

Test Weight

3

Harvest Appearance



Drydown
Excellent

Herbicide (Growth Regulators Sensitivity + 2 More)

A

Growth Regulators
Sensitivity

A

Isoxazoles
Sensitivity -
Preemergence

A

Sulfonylureas
Sensitivity

Plant Description (Cob Color + 2 More)

Red

Cob Color

Yellow

Kernel Cap Color

16

Kernel Row

Product Details Key:

Local Rating Scale



Highly Recommended



Recommended with Management



Use with Management



Not Recommended

National Rating Scale

1 = Excellent, 9 = Poor, NR = Not Recommended, - = data is insufficient at this time.

Herbicide Sensitivity

A = Acceptable, C = Caution, W = Warning. Environmental conditions may cause herbicide interactions different than indicated for a particular growing season.

Herbicide Tolerance

Ratings are based on observations and research using herbicides at labeled and above labeled rates to simulate extreme environmental conditions, misapplication and adverse soil pH or organic content.

GDU (Growing Degree Unit)

Ratings are based on observations and research using herbicides at labeled and above labeled rates to simulate extreme environmental conditions, misapplication and adverse soil pH or organic content.