



CORN SEED

# DKC59-81RIB Brand Blend

## Brand Blend

DKC59-81RIB Brand Blend offers growers a product that has shown great stability in appearance and performance across environments and geographies. It can provide a moderate plant stature with very good standability.



Selected Trait: **SmartStax® RIB Complete® corn blend**



SSRIB

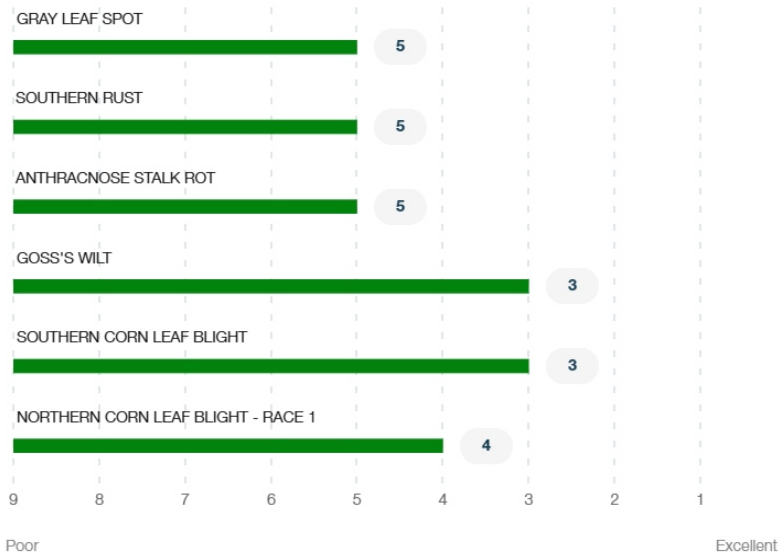
Maturity **109**

## Strengths

- Has shown very consistent ear development even under stress
- Can provide a good foliar disease tolerance package
- Very good greensnap and Goss's Wilt tolerance ratings
- Push plant populations to maximize yield potential
- Adapted to both dryland and irrigated environments
- Has shown stability across soil types

## Product Details

### Disease Ratings (Gray Leaf Spot + 5 More)



### Growth (Seedling Growth + 7 More)



  
Seedling Growth  
Excellent

  
Emergence  
Excellent

**3**  
Root Strength


**3**  
Stalk Strength

  
Drought Tolerance  
Excellent


  
Greensnap  
Tolerance  
Excellent

**Medium**  
Plant Height

**Medium**  
Ear Placement

**Management** (Gdus To Mid-Pollination + 6 More) 

GDUS TO MID-POLLINATION	1320
GDUS TO BLACK LAYER	2725
VALUE ADDED TRAIT	SSRIB
RELATIVE MATURITY	109
PLANTING RATE	Med High
NEW PRODUCT	NO
VARIETY	01081299

**Harvest** (Staygreen + 3 More) 

**3**  
Staygreen

**3**  
Harvest Appearance

**3**  
Drydown

**4**  
Test Weight

**Herbicide** (Growth Regulators Sensitivity + 2 More) 

**A**  
Growth Regulators  
Sensitivity

**A**  
Isoxazoles  
Sensitivity -  
Preemergence

**A**  
Sulfonylureas  
Sensitivity

**Plant Description** (Cob Color + 2 More) 

**Red**  
Cob Color

**Yellow**  
Kernel Cap Color

**18**  
Kernel Row

**Product Details Key:** 

**Local Rating Scale**

 Highly Recommended

 Recommended with Management

 Use with Management

 Not Recommended

 New Product

**National Rating Scale**

1 = Excellent, 9 = Poor, NR = Not Recommended, - = data is insufficient at this time.

**Herbicide Sensitivity**

A = Acceptable, C = Caution, W = Warning. Environmental conditions may cause herbicide interactions different than indicated for a particular growing season.

**Herbicide Tolerance**

Ratings are based on observations and research using herbicides at labeled and above labeled rates to simulate extreme environmental conditions, misapplication and adverse soil pH or organic content.

**GDU (Growing Degree Unit)**

Ratings are based on observations and research using herbicides at labeled and above labeled rates to simulate extreme environmental conditions, misapplication and adverse soil pH or organic content.