



CORN SEED

DKC59-82RIB Brand Blend

Brand Blend

DKC59-82RIB Brand Blend offers growers a product that has shown great stability in appearance and performance across environments and geographies. It can provide a moderate plant stature with very good standability.



Selected Trait: **VT Double PRO® RIB Complete® corn blend**



VT2PRI8

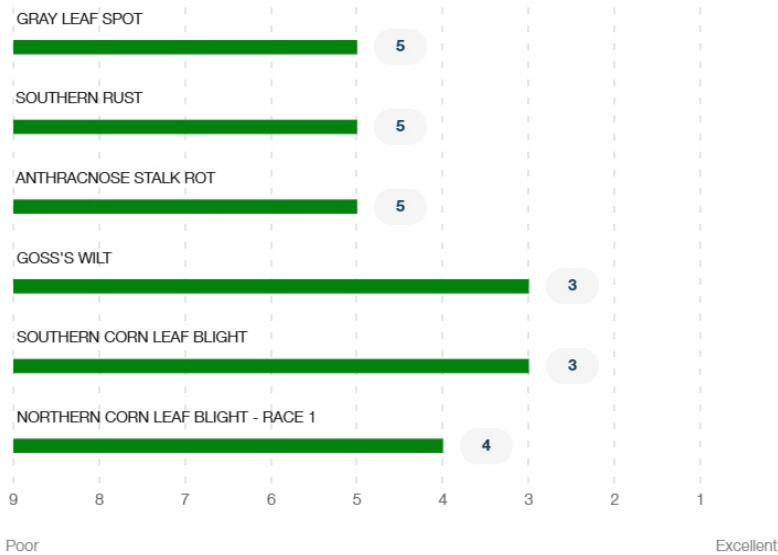
Maturity **109**

Strengths

- Has shown very consistent ear development even under stress
- Can provide a good foliar disease tolerance package
- Very good greensnap and Goss's Wilt tolerance ratings
- Push plant populations to maximize yield potential
- Adapted to both dryland and irrigated environments
- Has shown stability across soil types

Product Details

Disease Ratings (Gray Leaf Spot + 5 More)



Growth (Seedling Growth + 7 More)




Seedling Growth
Excellent


Emergence
Excellent

3
Root Strength


3
Stalk Strength


Drought Tolerance
Excellent



Greensnap
Tolerance
Excellent

Medium
Plant Height

Medium
Ear Placement

Management (Gdus To Mid-Pollination + 6 More) 

GDUS TO MID-POLLINATION	1320
GDUS TO BLACK LAYER	2725
VALUE ADDED TRAIT	VT2PRIB
RELATIVE MATURITY	109
PLANTING RATE	Med High
NEW PRODUCT	NO
VARIETY	01079571

Harvest (Staygreen + 3 More) 

3
Staygreen

3
Harvest Appearance

3
Drydown

4
Test Weight

Herbicide (Growth Regulators Sensitivity + 2 More) 

A
Growth Regulators
Sensitivity

A
Isoxazoles
Sensitivity -
Preemergence

A
Sulfonylureas
Sensitivity

Plant Description (Cob Color + 2 More) 

Red
Cob Color

Yellow
Kernel Cap Color

18
Kernel Row

Product Details Key: 

Local Rating Scale

 Highly Recommended

 Recommended with Management

 Use with Management

 Not Recommended

 New Product

National Rating Scale

1 = Excellent, 9 = Poor, NR = Not Recommended, - = data is insufficient at this time.

Herbicide Sensitivity

A = Acceptable, C = Caution, W = Warning. Environmental conditions may cause herbicide interactions different than indicated for a particular growing season.

Herbicide Tolerance

Ratings are based on observations and research using herbicides at labeled and above labeled rates to simulate extreme environmental conditions, misapplication and adverse soil pH or organic content.

GDU (Growing Degree Unit)

Ratings are based on observations and research using herbicides at labeled and above labeled rates to simulate extreme environmental conditions, misapplication and adverse soil pH or organic content.