



CORN SEED

DKC63-91RIB Brand Blend

Brand Blend

DKC63-91RIB Brand Blend is a broadly adaptable 113 RM product with high yield potential and very good Goss's Wilt tolerance. Additional strengths of this product include a nice late season appearance and strong standability.



Selected Trait: **VT Double PRO® RIB Complete® corn blend**



VT2PRI8

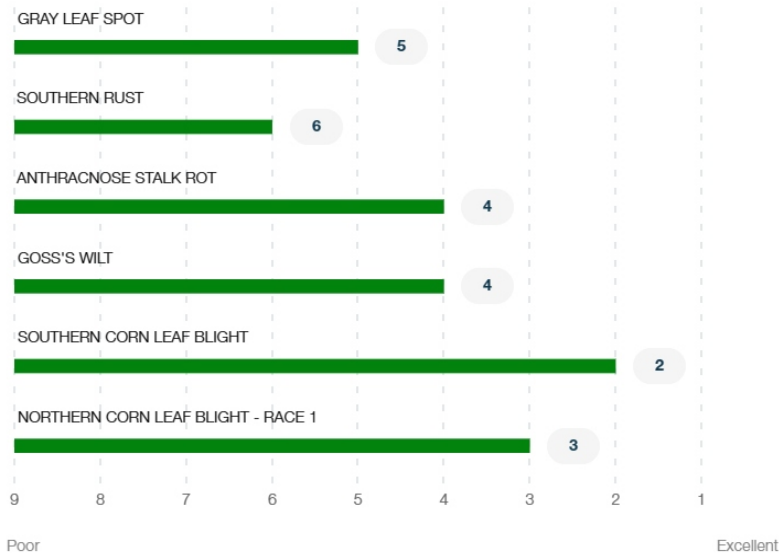
Maturity **113**

Strengths

- Has shown stable performance across environments
- Can stand well late into the season due to strong stalks and roots
- Has exhibited very good greensnap tolerance
- May benefit from a foliar fungicide in areas where Southern Rust is a concern
- Adaptable to both dryland and irrigated environments
- Can be planted across a range of populations


Product Details

Disease Ratings (Gray Leaf Spot + 5 More)



Growth (Seedling Growth + 7 More)



 Seedling Growth Excellent	3 Emergence	4 Root Strength
4 Stalk Strength	3 Drought Tolerance	3 Greensnap Tolerance
Medium Plant Height	Medium Ear Placement	

Management (Gdus To Mid-Pollination + 6 More) ^

GDUS TO MID-POLLINATION	1325
GDUS TO BLACK LAYER	2825
VALUE ADDED TRAIT	VT2PRIB
RELATIVE MATURITY	113
PLANTING RATE	Med High
NEW PRODUCT	NO
VARIETY	01076039

Harvest (Staygreen + 3 More) ^

3 Staygreen	4 Harvest Appearance	3 Drydown
5 Test Weight		

Herbicide (Growth Regulators Sensitivity + 2 More) ^






A Growth Regulators Sensitivity	A Isoxazoles Sensitivity - Preemergence	A Sulfonylureas Sensitivity
--	---	--

Plant Description (Cob Color + 2 More) ^

Red Cob Color	Yellow Kernel Cap Color	18 Kernel Row
-------------------------	-----------------------------------	-------------------------

Product Details Key: ^

Local Rating Scale

-  Highly Recommended
-  Use with Management
-  New Product
-  Recommended with Management
-  Not Recommended

National Rating Scale

1 = Excellent, 9 = Poor, NR = Not Recommended, - = data is insufficient at this time.

Herbicide Sensitivity

A = Acceptable, C = Caution, W = Warning. Environmental conditions may cause herbicide interactions different than indicated for a particular growing season.

Herbicide Tolerance

Ratings are based on observations and research using herbicides at labeled and above labeled rates to simulate extreme environmental conditions, misapplication and adverse soil pH or organic content.

GDU (Growing Degree Unit)

Ratings are based on observations and research using herbicides at labeled and above labeled rates to simulate extreme environmental conditions, misapplication and adverse soil pH or organic content.