



CORN SEED

# DKC64-64RIB Brand Blend

## Brand Blend

DKC64-64RIB Brand Blend is a high performing hybrid that has shown very good yield stability. Typically a moderate plant height with very good standability, it can provide good harvest timing flexibility.



Selected Trait: **SmartStax® RIB Complete® corn blend**



SSRIB

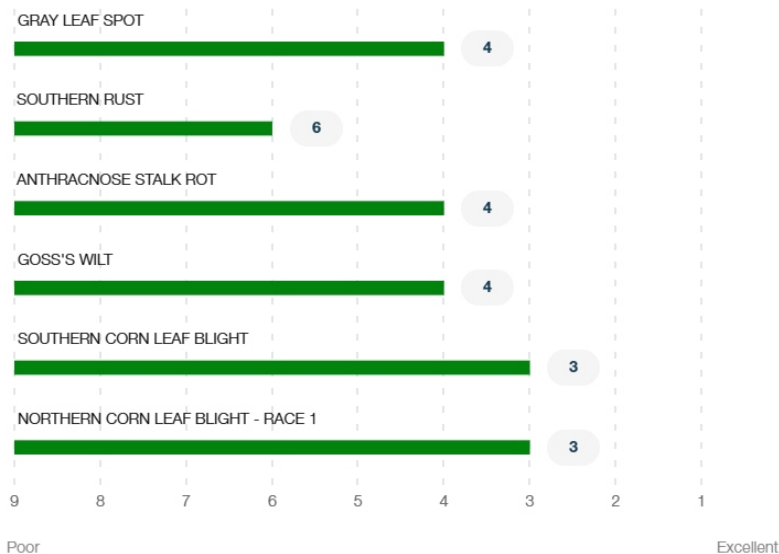
Maturity **114**

## Strengths

- Broadly adapted through the 110 and 115 RM zone
- Has shown very good emergence and early season vigor
- Best positioned on medium to high yield environments
- Can provide very good greensnap tolerance and Goss's Wilt tolerance for western geographies
- Has shown very good stalk and root strength
- Has shown strong performance in corn following corn rotations
- A fungicide application may benefit performance in fields where Southern Rust is prominent

## Product Details

### Disease Ratings (Gray Leaf Spot + 5 More)



### Growth (Seedling Growth + 7 More)

<b>3</b> Seedling Growth	<b>2</b> Emergence Excellent	<b>2</b> Root Strength Excellent
<b>3</b> Stalk Strength	<b>3</b> Drought Tolerance	<b>3</b> Greensnap Tolerance
<b>Medium</b> Plant Height	<b>Medium</b> Ear Placement	

**Management** (Gdus To Mid-Pollination + 6 More) ^

GDUS TO MID-POLLINATION	1345
GDUS TO BLACK LAYER	2835
VALUE ADDED TRAIT	SSRIB
RELATIVE MATURITY	114
PLANTING RATE	Medium
NEW PRODUCT	NO
VARIETY	01085023

**Harvest** (Staygreen + 3 More) ^

<b>3</b> Staygreen	<b>3</b> Harvest Appearance	<b>3</b> Drydown
<b>4</b> Test Weight		

**Herbicide** (Growth Regulators Sensitivity + 2 More) ^

<b>A</b> Growth Regulators Sensitivity	<b>A</b> Isoxazoles Sensitivity - Preemergence	<b>A</b> Sulfonylureas Sensitivity
--	---	--

**Plant Description** (Cob Color + 2 More) ^

<b>Red</b> Cob Color	<b>Yellow</b> Kernel Cap Color	<b>16</b> Kernel Row
-------------------------	-----------------------------------	-------------------------

**Product Details Key:** ^

**Local Rating Scale**

- ★ Highly Recommended
- 🚩 Use with Management
- ⚙️ New Product
- 🛡️ Recommended with Management
- 🚫 Not Recommended

**National Rating Scale**

1 = Excellent, 9 = Poor, NR = Not Recommended, - = data is insufficient at this time.

**Herbicide Sensitivity**

A = Acceptable, C = Caution, W = Warning. Environmental conditions may cause herbicide interactions different than indicated for a particular growing season.

**Herbicide Tolerance**

Ratings are based on observations and research using herbicides at labeled and above labeled rates to simulate extreme environmental conditions, misapplication and adverse soil pH or organic content.

**GDU (Growing Degree Unit)**

Ratings are based on observations and research using herbicides at labeled and above labeled rates to simulate extreme environmental conditions, misapplication and adverse soil pH or organic content.