



CORN SEED

DKC64-65RIB Brand Blend

Brand Blend

DKC64-65RIB Brand Blend is a high performing hybrid that has shown very good yield stability. Typically a moderate plant height with very good standability, it can provide good harvest timing flexibility.



Selected Trait: **VT Double PRO® RIB Complete® corn blend**



VT2PRI8

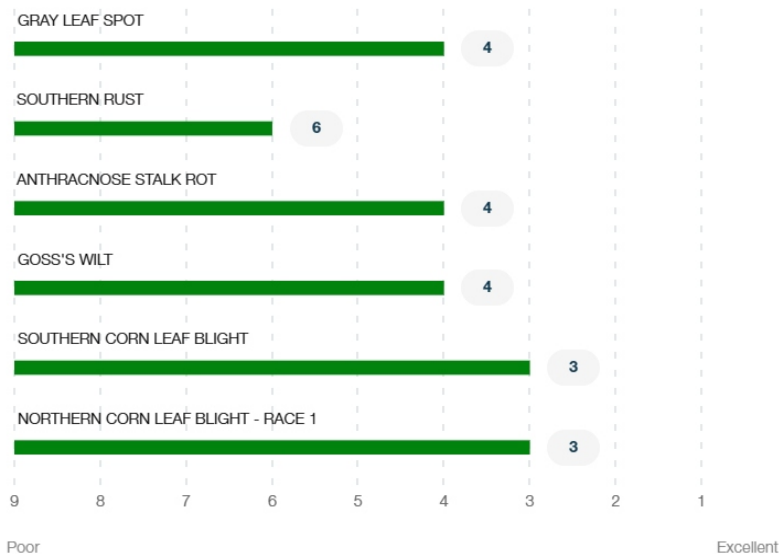
Maturity **114**

Strengths

- Broadly adapted through the 110 and 115 RM zone
- Has shown very good emergence and early season vigor
- Best positioned on medium to high yield environments
- Can provide very good greensnap tolerance and Goss's Wilt tolerance for western geographies
- Has shown very good stalk and root strength
- Has shown strong performance in corn following corn rotations
- A fungicide application may benefit performance in fields where Southern Rust is prominent

Product Details

Disease Ratings (Gray Leaf Spot + 5 More)



Growth (Seedling Growth + 7 More)

3 Seedling Growth	2 Emergence Excellent	2 Root Strength Excellent
3 Stalk Strength	3 Drought Tolerance	3 Greensnap Tolerance
Medium Plant Height	Medium Ear Placement	

Management (Gdus To Mid-Pollination + 6 More) ^

GDUS TO MID-POLLINATION	1345
GDUS TO BLACK LAYER	2835
VALUE ADDED TRAIT	VT2PRIB
RELATIVE MATURITY	114
PLANTING RATE	Medium
NEW PRODUCT	NO
VARIETY	01085024

Harvest (Staygreen + 3 More) ^

3 Staygreen	3 Harvest Appearance	3 Drydown
4 Test Weight		

Herbicide (Growth Regulators Sensitivity + 2 More) ^

A Growth Regulators Sensitivity	A Isoxazoles Sensitivity - Preemergence	A Sulfonylureas Sensitivity
--	---	--

Plant Description (Cob Color + 2 More) ^

Red Cob Color	Yellow Kernel Cap Color	16 Kernel Row
-------------------------	-----------------------------------	-------------------------

Product Details Key: ^

Local Rating Scale

- ★ Highly Recommended
- 🚩 Use with Management
- ⚙️ New Product
- 🛡️ Recommended with Management
- 🚫 Not Recommended

National Rating Scale

1 = Excellent, 9 = Poor, NR = Not Recommended, - = data is insufficient at this time.

Herbicide Sensitivity

A = Acceptable, C = Caution, W = Warning. Environmental conditions may cause herbicide interactions different than indicated for a particular growing season.

Herbicide Tolerance

Ratings are based on observations and research using herbicides at labeled and above labeled rates to simulate extreme environmental conditions, misapplication and adverse soil pH or organic content.

GDU (Growing Degree Unit)

Ratings are based on observations and research using herbicides at labeled and above labeled rates to simulate extreme environmental conditions, misapplication and adverse soil pH or organic content.